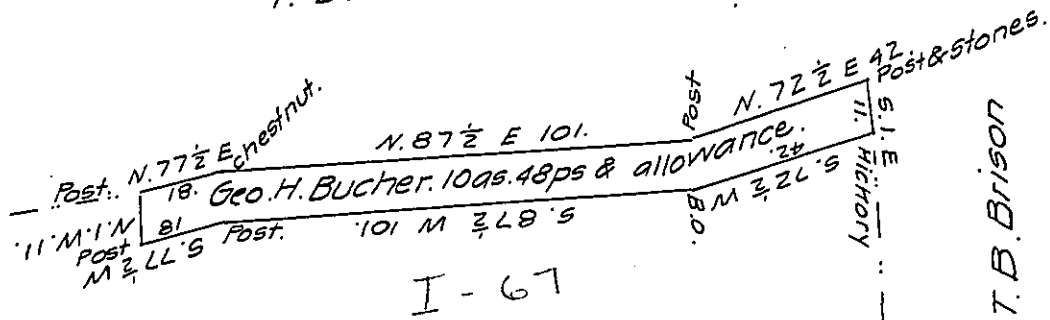


T. B. Brison



T. B. Brison

George H. Bucher.

A draft of a tract of land situated in the township of Frye, Perry County, containing 10 acres, 48 perches and allowance of six per cent for roads, &c. Surveyed the 8th day of April 1873, in pursuance of a Warrant granted to George H. Bucher dated the 10th day of August 1872.

S. H. Galbraith C.S.

To Robert B. Beath

Surveyor General.

I hereby certify that the foregoing is a correct copy of a survey filed amongst the records of the County Surveyor's office of this County, and that it has been examined by me and found to be correct. Feby 6th 1880.

To Hon. ——— Dunkle

D. Mitchell C.S.

Secy Int'l Affairs

IN TESTIMONY that the above is a copy of the original remaining on file in the Department of Internal Affairs of Pennsylvania, made conformably to an Act of Assembly approved the 16th day of February 1833, I have hereunto set my hand and caused the Seal of said Department to be affixed at Harrisburg, this twenty-fourth day of January 1908

Henry Houck
Secretary of Internal Affairs.